

CONFIDENTIAL



You are invited to

LumiVoce Foundation's 10th Anniversary Gala
Kaleidoscope of Ecosystems
A celebration of a decade of impact

Event Date: Saturday, April 18th, 2026

Venue: The Fullerton Ocean Park Hotel Hong Kong





Relationships/Interconnectedness

E **A** **R** **T** **H**

Education

Arts & Creativity

Holistic Wellbeing

A MILESTONE TO CELEBRATE

The "**Kaleidoscope of Ecosystems**" Gala is a celebration of the rich diversity of our planet and of our shared progress through a holistic outlook into the future.

Guests will experience:

- An exclusive performance by a children's choir.
- An inspiring exhibition of our students' wildlife artwork.
- A special conservation musical performance by our founder, Dr. Ying Ying Liu.
- A renowned jazz ensemble to perform lively music from across the world.
- An immersive evening with artistic installations and soundscapes bringing the world's most vital ecosystems to life in the ballroom.
- Silent Auction.



10th Anniversary Gala – Kaleidoscope of Ecosystems

Date: Saturday, April 18th, 2026.

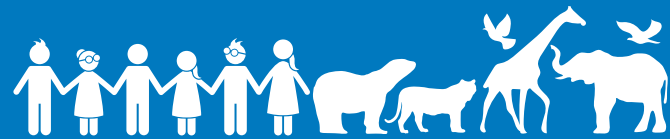
Venue: The Fullerton Ocean Park Hotel Hong Kong.

Dress Code: Black Tie with "Nature-Inspired Elegance" (e.g., botanical colors, sustainable materials).

Schedule: Doors open at 6:00 PM; Gala begins at 7:00 PM.

Goals:

- Celebrate 10 years of impact
- Raise HK\$1M for youth biodiversity education



OUR MISSION & IMPACT

Our unique approach combines **Aesthetic Education (AE)** with **Social and Emotional Learning (SEL)** to foster passion among the youth and harness the power of the arts for biodiversity education:

10 years connecting youth, arts and nature

32,000+
students
educators
families

270+
schools
studios
institutions

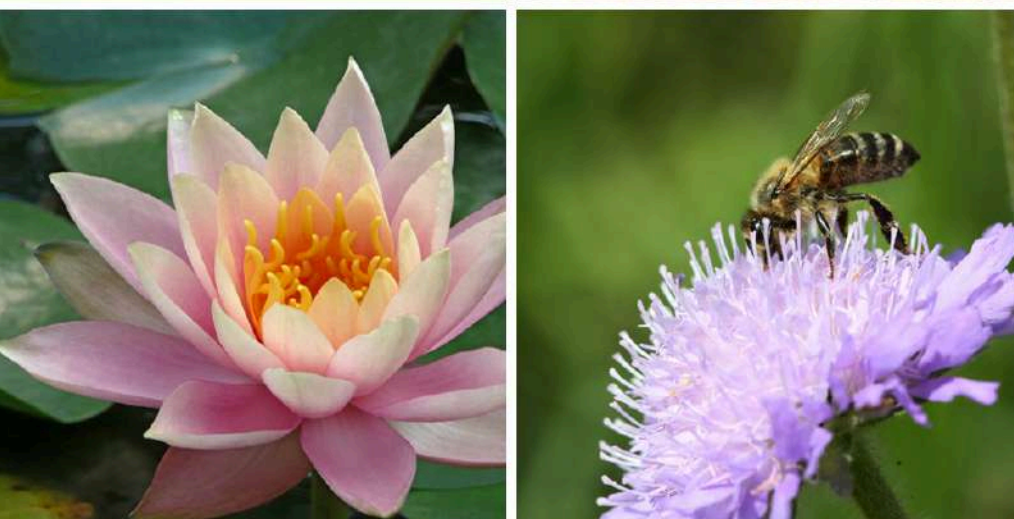
135+
artists
wildlife
experts

OUR VISION

We inspire and educate the young to fall in love and protect wildlife and biodiversity through the power of music, arts, and education, because “**we protect what we love**”. We enable young creative voices for biodiversity and a sustainable planet.

WHY PARTNER WITH US

- **Transform** thousands of children into passionate stewards of our planet while supporting their holistic wellbeing and resilience
- **Demonstrate** a meaningful commitment to your Environment, Social, Governance (ESG) goals and a sustainable future for Hong Kong.
- **Provide** opportunities for primary and secondary students, inclusive of all youth with a special focus on supporting the under-represented community, to learn about nature and biodiversity.
- **Connect** with exclusive, high-profile philanthropists and individuals
- **Align** your brand with youth, arts and environment
- **Gain** year-round visibility with impact
- **Contribute** to the future – meaningful partnership to support youth, biodiversity education, community, and sustainability
- **Access** through various sponsorship levels



THE CURRENT APPROACH TO BIODIVERSITY EDUCATION IS NOT WORKING

Why does biodiversity matter?

- Monitored wildlife populations size declined by an average of **73%** since 1970¹
- More than **75%** of global food crops rely on pollinators²
- **55%** of global GDP is moderately or highly dependent on nature³

Current biodiversity education challenge

- Only **4.2%** of Hong Kong students were well-informed about the biodiversity in Hong Kong⁴
- **Almost half** of teachers indicated that their schools **have never** organized any biodiversity-related activities⁴

Traditional methods are not effectively reaching students or inspiring action. As a result, the urgency for biodiversity education is at an all time high. We face a **crucial challenge**: *transforming awareness into long term commitment.*

1. Living Planet Report by WWF, 2024

2. Global Action on Pollination Services for Sustainable Agriculture report by FAO in 2023

3. Global Nature and Biodiversity Capabilities report by PwC in 2023

4. Attitude and Level of Knowledge of the General Public and Stakeholder Groups Towards Biodiversity Report by AFCD in 2023



OUR STORY: GIVING A VOICE FOR THE WILD

LumiVoce Foundation was born from a unique legacy. Our founder, Dr. Ying Ying Liu, is an internationally known pianist, vocalist, educator, published author, and leadership expert. She is the daughter of Liu Chi, one of the most celebrated Chinese composers of the 20th century.

Combining her skills and passions, she founded LumiVoce in 2016. Ying Ying now devotes her musical talent and leadership expertise to wildlife conservation to address a critical challenge: *how do we inspire future generations to protect the “voiceless” wildlife and planet?*

Her answer was to devote her energy and expertise to biodiversity education, creating a unique foundation that harnesses the emotional power of music and art to build a lasting, heartfelt connection between the youth and the natural world. Her goal is to plant the seeds of love for wildlife in the hearts of the children.

"I hope my voice will inspire others to join in. One voice becomes thousands of voices, like a great symphony of love for the wild."

Dr. Ying Ying Liu, Founder and Chairperson, LumiVoce Foundation Ltd.



OUR UNIQUE APPROACH: INSPIRING LOVE, NOT JUST SHARING KNOWLEDGE

We believe that true conservation begins with **love**.

While traditional environmental organizations focus on science, LumiVoce Foundation programs engage the heart. Our solution is grounded in our unique and proven approach that combines **Aesthetic Education (AE)** with **Social and Emotional Learning (SEL)** to foster passion among youth by harnessing the power of music and the arts for biodiversity education. LumiVoce is recognized a unique pioneer in this approach across Hong Kong with proven impact.

Through our programs, students learn about more than just the importance of biodiversity. They are guided to explore the natural world through creativity by their artistic expressions, and become its champions. Our holistic approach helps cultivate the next generation of passionate environmental stewards as well as support their mental well-being.

"By joining this challenge, I had been given a great opportunity to know more about the touching story and knowledges of different kinds of animals."

Sunnie Wu, local primary school student



Voices for the Planet – Mindful Arts, Hopeful Future (V4TP – MAHF)

Sponsored by Drs. Richard Charles and Esther Yewpick Lee Charitable Foundation. An annual online wildlife art competition that offers free participation for students from primary to secondary schools.



Youth4Nature – Empower Youths for a Shared Biodiverse Future

A program designed to equip secondary school students in Hong Kong with the knowledge and skills to become champions for biodiversity conservation.



Ensoul (Conservation Music Videos)

A series of unique conservation music videos, showcasing endangered animals and their natural habitats, to establish emotional connections through the power of music and emotive videos, while providing educational content.



Wildlife Story Series (WSS)

A series of heartwarming stories depicting endangered animal species, based on real situations shared by our partners working in the field.



Friends of LumiVoce (FoLV)

A community engagement program for friends with a shared passion for music and nature.



OUR GOAL: FUELING THE NEXT DECADE OF IMPACT

To continue our vital work and expand our reach, our fundraising goal for the gala is **HK\$1 million**.

Your support will help to expand our impact over 3 years to reach:

- Over **20,000** direct/indirect beneficiaries from our programs (Voices for the Planet - Mindful Arts, Hopeful Future Challenge, Summer Camp, Educator Training, Wildlife Story Series, Ensoul Conservation Music Videos), including students, teachers and parents, with the under-represented community representing the majority of beneficiaries
- Over **1,500** direct/indirect beneficiaries from our Youth4Nature Ambassador Program

*Net proceeds from the event will be dedicated entirely to funding our core educational programs. For full transparency, an event budget breakdown can be provided.



YOUR OPPORTUNITY: HOW CAN YOU SUPPORT?

Tailor your sponsorship experience by choosing benefits that match your desired level of visibility and engagement. Enjoy the flexibility to curate a partnership that reflects your unique goals and commitment.

Two options to support the gala:

Option 1: includes gala seats **and** Friends of LumiVoce annual membership

Option 2: includes gala seats and **excludes** Friends of LumiVoce annual membership

Including gala seats and Friends of LumiVoce annual membership



LumiVoce 明音

	 <p>TITLE SPONSOR MARINE HABITAT HKD 200,000</p>	 <p>SAVANNAH SPONSORS HKD 150,000</p>	 <p>HIGH MOUNTAINS SPONSORS HKD 120,000</p>	 <p>REEF MAGIC SPONSORS TABLE HKD 100,000</p>	 <p>INDIVIDUAL SEATS HKD 10,000</p>
Seats	10 Seats	10 Seats	10 Seats	10 Seats	1 Seat
LumiVoce Annual Membership (including 3 salon events/year)	✓	✓	✓	✓	✓
Keynote at Gala	3 minute (co-host)	2 minute	1 minute		
Prominent Name and Logo Placement	✓	✓	✓	✓	✓
Volunteer Opportunities in Flagship Programs	✓	✓	✓	✓	✓
Recognition in Gala Materials and Website	Two-page open spread	One page	One page	Half page	Name on a page
Voices from Sponsors (15s video montage showcased at Gala and website/YouTube)	✓	✓	✓	✓	✓
Year-round Exposure (website, newsletters and annual report visibility for a full year)	✓	✓	✓	✓	
Detailed Impact Reporting	✓	✓	✓	✓	
Community Visibility (media feature and press releases)	✓	✓	✓	✓	
Award Presenter at Gala	✓	✓	✓	✓	
Named Sponsorship (including naming rights, referring to the following year-round exposure) on:					
1. Educational Resources	✓	✓	✓	✓	
2. Youth4Nature Program	✓	✓	✓		
3. Salon Events	✓	✓			
4. Ensoul Conservation Music Video	✓				
Thought Leadership and Engagement Opportunities (guest speakers, panelists or expert commentary at LumiVoce workshops or events)	✓	✓			
Exclusive Commemorative Performance (at gala)	✓				



Frequently Asked Questions

Sponsorship Logistics

If I am an existing member and I want to renew my FoLV membership and participate in the gala, what do I need to pay?

(The gala seats are based on \$4,000 per seat for existing members)

Turtle Level:

- Your current Turtle level membership is **\$6,000** - which includes 3 salon events for **1 person** without attending the gala.
- If you choose to celebrate with us, you may donate **an additional \$4,000** to include **1 seat for the gala**, plus the **3 regular salon events for the year**. Therefore, total donation amount equals **\$10,000**.

Pangolin Level:

- Your current Pangolin level membership is **\$12,000** - which includes 3 salon events for **2 people** and **1 seat** at the gala. You may choose to renew your membership without additional cost to include the aforementioned benefits.
- If you choose to celebrate with us with **2 people**, you may donate **an additional \$4,000** to include **2 seats for the gala**, plus the **3 regular salon events for the year**. Therefore, total donation amount equals **\$16,000**.

Shark Level:

- Your current Shark level membership is **\$20,000** - which includes 3 salon events for **3 people** and **3 seats** at the gala.
- If you choose to celebrate with us, the Shark membership covers **3 seats for the gala**, plus the **3 regular salon events for the year** at no extra charge.

Rhino Level:

- Your current Rhino level membership is **\$50,000** - which includes 3 salon events for **4 people** and **5 seats at the gala** (half a table).
- If you choose to celebrate with us, the Rhino membership covers **5 seats for the gala** (half a table), plus the **3 regular salon events for the year** at no extra charge.

Elephant Level:

- Your current Elephant level membership is **\$100,000** - which includes 3 salon events for **6 people** and **10 seats at the gala** (full table).
- If you choose to celebrate with us, the Elephant membership covers **10 seats for the gala** (full table), plus the **3 regular salon events** for the year at no extra charge.

If I am an existing FoLV member and I simply want to renew without participating in the gala, can I do that?

Yes. You may renew your FoLV annual membership without participating at the gala event, following the current annual membership value based on your membership level.

Including gala seats and excluding Friends of LumiVoce annual membership



	REEF MAGIC SPONSORS HKD 80,000	DANCING DESERT SPONSORS HKD 65,000	FROZEN FRONTIERS SPONSORS HKD 50,000	SONGS OF THE RAINFOREST INDIVIDUAL SEATS HKD 5,000
Seats	10 Seats	10 Seats	10 Seats	1 Seat
Recognition in Printed Gala Materials	Half page	✓	✓	✓
Volunteer Opportunities in Flagship Programs	✓	✓	✓	
Year-round Exposure (website, newsletters and annual report visibility for a full year)	✓	✓		
Prominent Name and Logo Placement on Backdrop	✓			
Detailed Impact Reporting	✓			
Community Visibility (media feature and press releases)	✓			
Award Presenter at Gala	✓			

FAQs: Sponsorship Logistics

If I am not a member of Friends of LumiVoce and I only want to attend the gala without joining the Friends of LumiVoce membership, how can I contribute?

You may view above (Sponsorship Option 2) to learn how you can attend and contribute to the gala without the Friends of LumiVoce membership.



WE WOULD LOVE TO CONNECT WITH YOU TO EXPLORE PARTNERSHIP POSSIBILITIES:

Dr. Ying Ying Liu - Founder and Director

yingying@lumivoce.org

+852 5631 0998

Karen Bongrain - Project Manager

karen@lumivoce.org

+852 9196 6472

We invite you to be a part of LumiVoce Foundation's next chapter. Your support will be transformed into the artistic power of Hong Kong's youth, encouraging creativity for biodiversity conservation, empowering under-represented children, supporting the overall wellbeing of youth, and creating a lasting symphony of love for our planet.

Thank you for considering this opportunity to partner with LumiVoce Foundation.





Frequently Asked Questions

Event Logistics

Is my sponsorship contribution tax-deductible?

Yes. As LumiVoce Foundation is a registered Section 88 NGO in Hong Kong, 100% of your donation is tax-deductible. Net proceeds from the gala are dedicated entirely to funding our core educational programs.

What are the key event details I need to share with my guests?

- Date: Saturday, April 18th, 2026.
- Venue: The Fullerton Ocean Park Hotel Hong Kong.
- Dress Code: Black Tie with "Nature-Inspired Elegance" (e.g., botanical colors, sustainable materials).
- Schedule: Doors open at 6:00 PM; Gala begins at 7:00 PM.

How are corporate tables organized?

Each table has 10 seats. Higher-tiered sponsors will receive prime location within the ballroom. Sponsors may arrange their own table seating plan.





Frequently Asked Questions

Our Impact & Partnership Value

How does supporting LumiVoce Foundation align with our corporate ESG goals?

Biodiversity loss is a critical global crisis, with a 73% decline in wildlife populations since 1970. Partnering with us demonstrates a concrete commitment to the "Environment" and "Social" pillars of ESG by funding biodiversity education and supporting the holistic well-being of Hong Kong's youth. Furthermore, as 55% of global GDP depends on nature, this is an investment in a sustainable economic future.

Do you collaborate with other NGOs or institutions to drive collective momentum?

Yes. We recognize that protecting biodiversity requires a unified effort. Our philosophy is that "one voice becomes thousands of voices". We actively collaborate with a network of frontline conservation partners and academic institutions—including Lingnan University and The Nature Conservancy—to source real-world expertise and content. For example, our Wildlife Story Series is based on real situations shared by partners working in the field. Additionally, our leadership includes executives from other environmental groups (such as A Plastic Ocean Foundation), creating a powerful alliance that connects over 270 schools, 135 artists, and 135 experts across sectors.

What makes LumiVoce Foundation's approach to biodiversity education unique?

While traditional organizations focus heavily on science and facts, we believe true conservation begins with love. Our unique approach combines Aesthetic Education (AE) with Social and Emotional Learning (SEL). By using music, art, and creativity, we help students—especially those from under-represented communities—build a heartfelt, lasting connection to nature rather than just memorizing data.

How will our sponsorship funds be utilized to create impact?

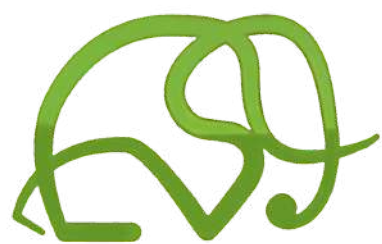
Your support targets a fundraising goal of HK\$1M to fuel our next three years of work. This will start enabling educational programs for over 20,000 beneficiaries, including the "Voices for the Planet" challenge and "Ensoul" conservation music videos. It also supports the "Youth4Nature" program, equipping secondary students to become biodiversity champions.

Beyond the Gala, how can our employees engage with LumiVoce Foundation?

We view sponsorship as an active partnership. Depending on your sponsorship level, we offer year-round volunteer opportunities within our flagship programs and thought leadership opportunities for your executives at our workshops or events. Your team can actively participate in fostering creativity and environmental stewardship among Hong Kong students.

How does LumiVoce Foundation measure success and report back to sponsors?

We value transparency and long-term relationships. Sponsors receive detailed impact reporting, quarterly narrative updates plus survey results for each program. We track qualitative and quantitative metrics such as students and teachers satisfaction (surveys), student engagement (currently 32,000+ students), school participation (270+ schools), and the overall impact of our programs to ensure your contribution is generating tangible social return.



LumiVoce 明音

EVENT SPONSORS

THE FULLERTON
OCEAN PARK HOTEL • HONG KONG
香港富麗敦海洋公園酒店



NG TENG FONG
CHARITABLE FOUNDATION
黃廷方慈善基金



SINO GROUP
信和集團

PROGRAM SPONSORS

**Drs. Richard Charles
and Esther Yewpick Lee
Charitable Foundation
利銘澤黃瑤璧慈善基金會**





Dr. Ying Ying Liu – Founder and Chairperson

Dr. Ying Ying Liu is a pianist, vocalist, educator, published author, and leadership expert. An internationally acclaimed artist, she has performed around the world. From an early age, she has had a profound love for wildlife and nature. Upon learning that 73% of global wildlife have been lost in the last 50 years and 2 million species are at risk of extinction, Ying Ying took action and founded LumiVoce. Biodiversity supports our stable climate, promotes our health, and provides food, medicine, and other critical ecosystem services. More than 55% of global GDP is dependent on healthy ecosystems and intact biodiversity. Protecting biodiversity is essential for the wellbeing of our children and the future of our planet. Motivated by this urgency, Ying Ying, through LumiVoce, works to educate children about biodiversity, enabling them to learn by creating wildlife art. LumiVoce deeply connects children's hearts and minds to a sustainable planet.



Ms. Clarie Lo – Co-chair

Ms. Clarie Lo is currently the Chairman of the Dynamic Comity International Group. Formerly HKSAR's Deputy Secretary for Financial Services and the Treasury, she played a key role in shaping Hong Kong's financial and monetary policies. Ms. Lo represented Hong Kong and was the first female president of the Financial Action Task Force on anti-money laundering. After the terrorist attacks on September 11, 2001, she led the international community, including the FATF member countries, FATF-Style Regional Bodies, IMF, World Bank, etc. to formulate and execute policies on counter terrorist financing. Ms. Lo was the founding CEO of the China-United States Exchange Foundation, and continues to serve as a Counsellor until now. She has received several honors, including the Chief Executive's Commendation for Public Service, special award from the Singapore Minister for Home Affairs, and was an official Justice of the Peace.



Monique Chan - Honorary Treasurer

Ms. Monique Chan is CEO of LSQ Capital. She has 30 years in private banking leadership, including roles as Vice Chair Asia and CEO. Named one of Asia's Top 50 Most Influential Private Banking Executives. CPA (HK and Australia) and active in charity leadership.



Joy Xu - Director (HR)

Appointed in 2023, Ms. Joy Xu leads DFI's People and Culture strategy across all markets. She serves on the DFI Group Management Committee. With global HR leadership experience, she has been recognized by the World HRD Congress and Global Women's Forum.



Willy Kwong - Director (HR and Governance)

Mr. Willy Kwong is the Executive Director of A Plastic Ocean Foundation. He uses his background in marine biology and sociology to empower the next generation. He also serves on the Science Unit Advisory Board at Lingnan University.



Charles Bedford - Director (Governance)

Mr. Charles Bedford is Founder and CIO at Carbon Growth Partners, a leading investment company in the carbon markets. He previously served as Regional Managing Director for The Nature Conservancy (Asia Pacific). He advanced conservation goals across Asia and led TNC's Colorado Chapter. His prior roles include Director of the Colorado State Land Board and Legal Counsel to Governor Roy Romer.



Rosana Wong - Director (Sustainability)

Dr. Rosana Wong, MH is Deputy Chair of Yau Lee Holdings Limited, bringing over 30 years of global expertise in sustainable urban development through technology and strategic vision. Her commitment to sustainability is reflected in the adoption of lifecycle management, Virtual Design & Construction, and AI and Robotics, enhancing operational efficiency. Passionate about innovation for positive change, she founded Ophylla Ventures to support startups in smart city initiatives.



ENDORSEMENTS FROM OUR STUDENTS



The V4TP (Voices for the planet) challenge has taught me to be a responsible citizen, And a better friend to the earth. I hope to continue using my voice to inspire others to care for our planet.

To Sum Yuet, student from SKH Yan Laap Memorial Primary School



My goal in life is to reframe our human relationship with the natural world. I believe if we can all look at animals as essentially like ourselves, then everything will change for the better. This challenge taught me of the power that different artistic mediums have to communicate change.

Elliot Connor, student from Clear Water Bay School

By joining this challenge, I had been given a great opportunity to know more about the touching story and knowledges of different kinds of animals. This challenge stirs up my interest in exploring more and more amazing animal story and their lifestyle. It even influences my family as they like watching the animal documentary recommended by me. I am so glad to see the change happened in my family.

Sunnie Wu, student from Local Primary School



I like red coral the most because my mom and I had so much fun painting the coral tentacles together. I think the happiest moment of this competition is that I can paint with my mother, because we have never tried to paint together. I hope we can have more opportunities to paint together.

許穎妍, student from Maryknoll Fathers' School





ENDORSEMENTS FROM OUR PARENTS AND TEACHERS

Parents



I just wanted to take a moment to sincerely thank you and your team for the incredible Voices for the Planet challenge. It was such a meaningful and enriching experience, and I'm so glad it reached us here in South Africa. [..]
We are deeply grateful for the opportunity to be part of such a powerful initiative that nurtures young minds and inspires them to be global citizens.

Dr. Sonia Roopnarain, parent from St. Crawford International

She learned a lot during the competition. When Yuen Ying did research about the Chinese White Dolphin, she learned that the ocean is very polluted by plastic, and the sea creatures would digest it, so we started using less plastic and even started carrying recycled bags when we go out. It (the competition) also gave us (parents) a chance to learn about nature and biodiversity.

Lau Yuen Ying's Mother, parent from Maryknoll Fathers' School



We're lucky to join the competition. They (children) need to think about nature through music, and they normally don't have the chance to, so it's very special.

Olivia Hyde's Mother, parent from West Island School

Teachers

Voices for the Planet competition is by far the best competition we have done. It is focused on the learning process rather than winning prizes or awards. [...] The Voices for the Planet is purposely broad; as an educator I can't sing the praises of LumiVoce highly enough. LumiVoce is promoting biodiversity education which is incredibly meaningful, important, and relevant to all of us but even more so to the next generation. So I know my students are learning about something worthwhile.

Gavin Massingham, Teacher from S.K.H. Yan Laap Memorial Primary School



We are very happy to be part of this meaningful event. I think throughout the process not only our students awareness of conservation has been raised, they have become more compassionate. Because apart from instilling knowledge, we value students positive value education. Actually one of the focus is to teach students to be compassion and also responsible. It actually aligns with our teaching at school. The students have become more compassionate about the global issues, especially in conservation. We are really really looking forward to participate in the future events. We are very happy to be part of it, not just for the prizes and everything, we enjoyed to be part of global citizen to protect the earth.

Fion Li, teacher from Rosaryhil Secondary School

Protecting the biodiversity on our planet is more important than ever at the moment, it is really great to see our young people taking action and spreading the words, please keep spreading the words and we hope to see even more of you participating again in the competition next year!

Rachel Lavery, teacher from ESF Gleanealy School





ENDORSEMENTS FROM OUR COMMUNITY



As supporters of LumiVoce since its inception, we appreciate the wonderful experience of LumiVoce salon evenings - in stunning homes with the most gracious, fascinating hosts and diverse, multicultural guests.

What a special opportunity LumiVoce creates to join a community of music lovers who support biodiversity and sustainability, and education of Hong Kong youth on these important topics through the Arts!

Anne LeBourgeois & Robert Grieves, Co-founders and MD/Chairman, Hamilton Advisors



What a truly incredible performance - it sent shivers down my spine as Ying Ying's voice soared and took us to places of contemplation and healing.

Jill Robinson, Founder of Animal Asia



We had an amazing evening at Lumivoce's first member's salon. The musicians were top quality and we enjoyed such beautiful music. The private venue of Sol y Luna made the evening truly special. We had a great time and it is a privilege to support such a worthy cause.

Jennifer Parks, COO Asia-Pacific, White & Case LLP



Ying Ying's music brought me back to Africa. It felt as if I was really there, seeing the elephants and rhinos from the helicopter. It moved me to tears!

Maggie Q, Actress/Wildlife Champion



It was a great lecture, offering a very unique perspective and impactful music. At the very least we must not eat wild animals, use wildlife products, waste much resources or pollute the environment.

Wen Hai, Dean, Beijing University, HSBC Business School



Thank you Ying Ying Liu and Lumivoce for a fabulous, soul-enriching evening of your inspiring voice accompanied by beautiful music from Viva! Pipers Woodwind Quintet, in the lovely home of Jen and Michael Barth!

Wonderful to experience a special cultural evening in support of biodiversity conservation among friends.

Ms. Anne Copeland, CEO & Sustainability Advisor, Copeland & Partners Limited



Among the conservation organizations we support we feel that LumiVoce is the most powerful in focusing its message where it can have the most direct impact - instilling in young people the concern for the protection of the world's vulnerable wildlife. Dr. Liu has embarked on a promising journey to create a more sustainable and enriching world. We fully support LumiVoce's efforts in this regard.

Dr. Theodore & Lavaughn Craig, previous Friends of LumiVoce members



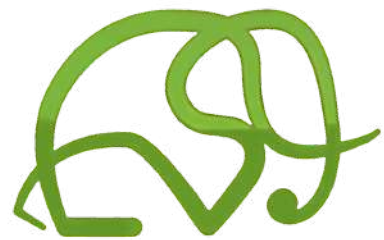
As the parents of three children, we are very concerned by the kind of planet they will live in as adults. We have been especially moved by LumiVoce's methods of appealing to the young generation through music in order to raise awareness of the environmental challenges we are facing. We entirely support the beautiful cause, which is close to our hearts, and we will keep on spreading the word.

Alexandre and Agnes Casin, Managing Director at Nendo Labs



LumiVoce's focus on using the arts to educate both children and adults is a uniquely creative and effective call to action. It is the children of Hong Kong today who will be the champions of wildlife conservation tomorrow. We are honoured to be part of the LumiVoce community and look forward to the great success of the many innovative programs that Ying Ying and her team will accomplish in the years to come.

Ray & Sally Helfer, Advisor to LumiVoce Foundation



LumiVoce 明音

SCHOOLS WE WORK WITH



AND MORE



EVENT SUPPORTER



OTHER SUPPORTERS

